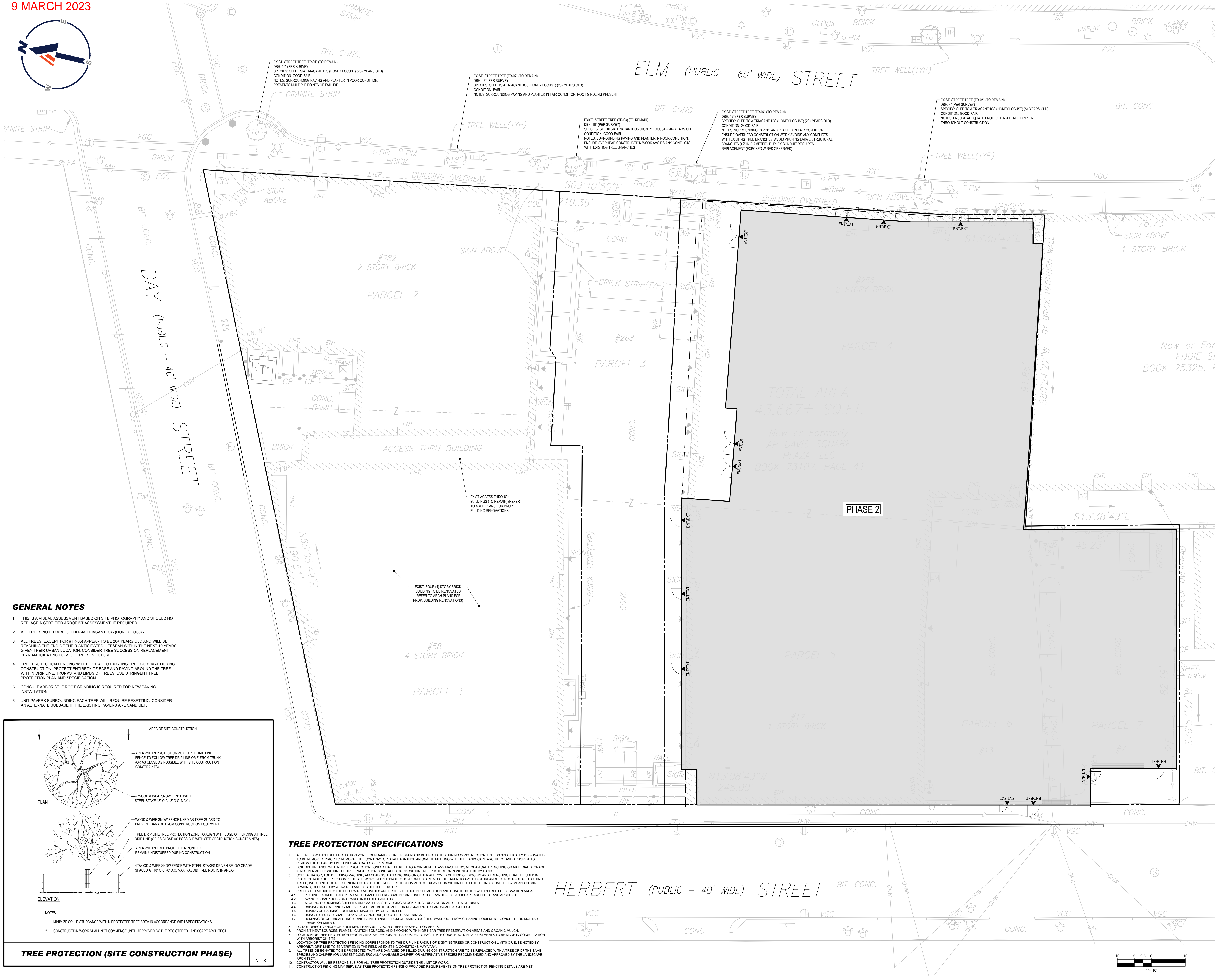
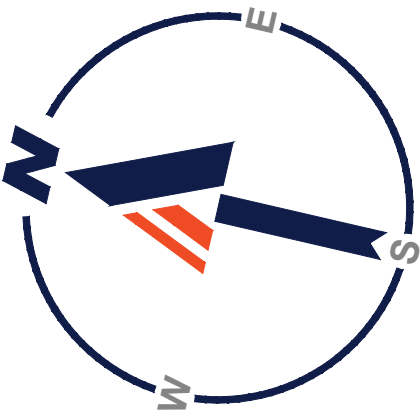
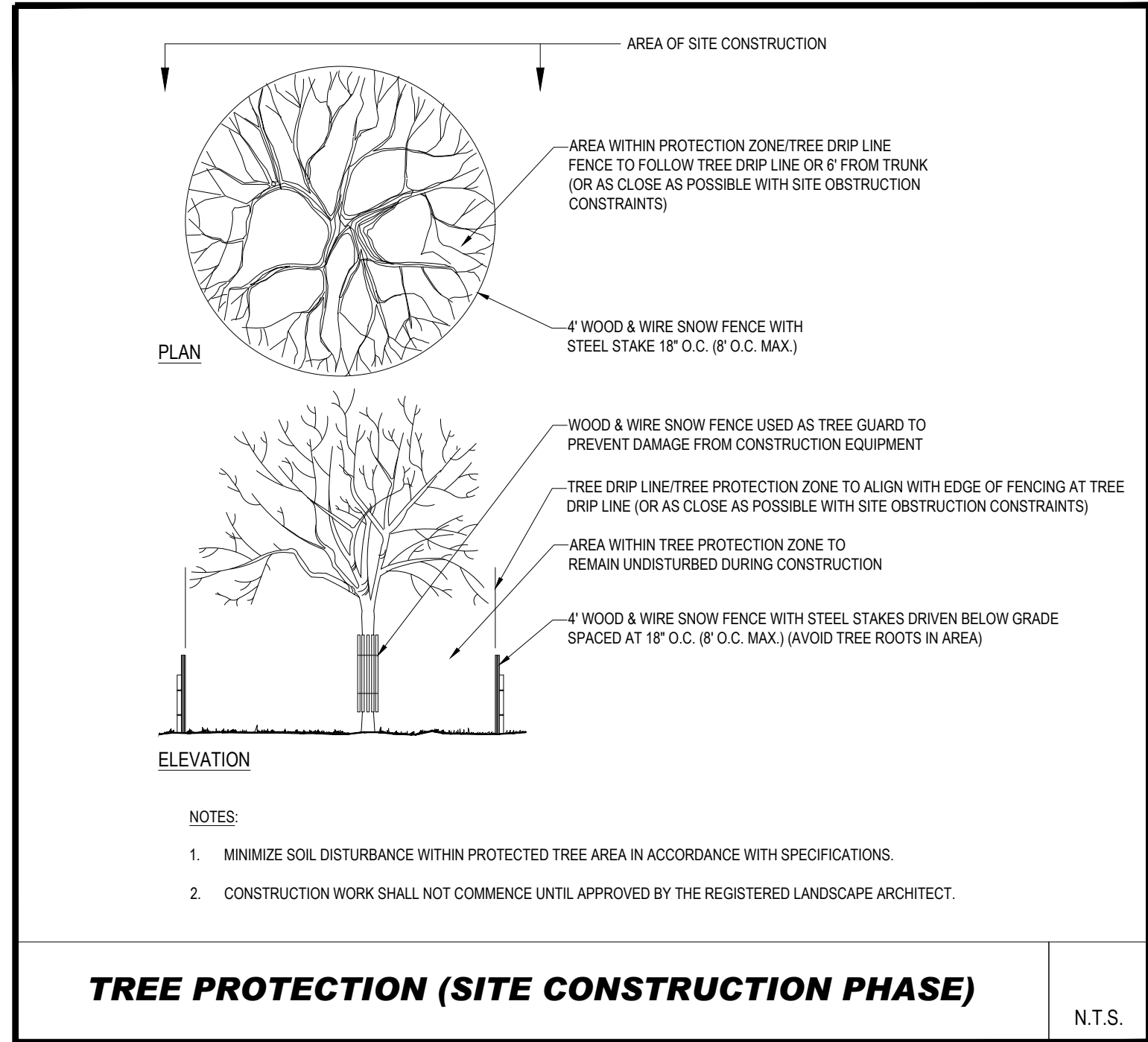


9 MARCH 2023



GENERAL NOTES

1. THIS IS A VISUAL ASSESSMENT BASED ON SITE PHOTOGRAPHY AND SHOULD NOT REPLACE A CERTIFIED ARBORIST ASSESSMENT, IF REQUIRED.
2. ALL TREES NOTED ARE GLEDITSIA TRIACANTHOS (HONEY LOCUST).
3. ALL TREES (EXCEPT FOR #TR-05) APPEAR TO BE 20+ YEARS OLD AND WILL BE REACHING THE END OF THEIR ANTICIPATED LIFESPAN WITHIN THE NEXT 10 YEARS GIVEN THEIR URBAN LOCATION. CONSIDER TREE SUCCESSION REPLACEMENT PLAN ANTICIPATING LOSS OF TREES IN FUTURE.
4. TREE PROTECTION FENCING WILL BE VITAL TO EXISTING TREE SURVIVAL DURING CONSTRUCTION. PROTECT ENTIRETY OF BASE AND PAVING AROUND THE TREE WITHIN DRIP LINE, TRUNKS, AND LIMBS OF TREES. USE STRINGENT TREE PROTECTION PLAN AND SPECIFICATION.
5. CONSULT ARBORIST IF ROOT GRINDING IS REQUIRED FOR NEW PAVING INSTALLATION.
6. UNIT PAVERS SURROUNDING EACH TREE WILL REQUIRE RESETTling. CONSIDER AN ALTERNATE SUBBASE IF THE EXISTING PAVERS ARE SAND SET.



TREE PROTECTION SPECIFICATIONS

1. ALL TREES WITHIN TREE PROTECTION ZONE BOUNDARIES SHALL REMAIN AND BE PROTECTED DURING CONSTRUCTION UNLESS SPECIFICALLY DESIGNATED TO BE REMOVED PRIOR TO REMOVAL. THE CONTRACTOR SHALL ARRANGE AN ON-SITE MEETING WITH THE LANDSCAPE ARCHITECT AND ARBORIST TO REVIEW THE CLEARING LIMIT LINES AND DATES OF REMOVAL.
2. SOIL DISTURBANCE WITHIN TREE PROTECTION ZONES SHALL BE KEPT TO A MINIMUM. HEAVY MACHINERY, MECHANICAL TRENCHING OR MATERIAL STORAGE IS NOT PERMITTED WITHIN THE TREE PROTECTION ZONE. ALL DIGGING WITHIN TREE PROTECTION ZONE SHALL BE BY HAND.
3. CORE AUGER, TOP DRESSING MACHINE, AIR SPADING, HAND DIGGING OR OTHER APPROVED METHOD OF DIGGING AND TRENCHING SHALL BE USED IN PLACE OF ROTOTILLER TO COMPLETE ALL WORK IN TREE PROTECTION ZONES. CARE MUST BE TAKEN TO AVOID DISTURBANCE TO ROOTS OF ALL EXISTING TREES, INCLUDING ROOTS EXTENDING OUTSIDE THE TREE PROTECTION ZONES. EXCAVATION WITHIN PROTECTED ZONES SHALL BE BY MEANS OF AIR SPADING, OPERATED BY A TRAINED AND CERTIFIED OPERATOR.
4. PROHIBITED ACTIVITIES: THE FOLLOWING ACTIVITIES ARE PROHIBITED DURING DEMOLITION AND CONSTRUCTION WITHIN TREE PRESERVATION AREAS:
 - 4.1. PLACING BACKFILL, EXCEPT AS AUTHORIZED FOR RE-GRADING AND UNDER OBSERVATION BY LANDSCAPE ARCHITECT AND ARBORIST.
 - 4.2. DUMPING BACKFILL OR CRANES INTO TREE CANOPIES.
 - 4.3. STORING OR DUMPING SUPPLIES AND MATERIALS INCLUDING STOCKPILING EXCAVATION AND FILL MATERIALS.
 - 4.4. PAILING OR LOWERING GRADES, EXCEPT AS AUTHORIZED FOR RE-GRADING BY LANDSCAPE ARCHITECT.
 - 4.5. DRIVING OR PARKING EQUIPMENT, MACHINERY, OR VEHICLES.
 - 4.6. USING TREES FOR CRANE STAYS, GUY ANCHORS, OR OTHER FASTENINGS.
 - 4.7. DUMPING OF CHEMICALS, INCLUDING PAINT THINNER FROM CLEANING BRUSHES, WASH-OFF FROM CLEANING EQUIPMENT, CONCRETE OR MORTAR, TRASH OR DEBRIS.
5. DO NOT DIRECT VEHICLE OR EQUIPMENT EXHAUST TOWARD TREE PRESERVATION AREAS.
6. PROHIBIT HEAT SOURCES, FLAMES, IGNITION SOURCES, AND SMOKING WITHIN OR NEAR TREE PRESERVATION AREAS AND ORGANIC MULCH.
7. LOCATION OF TREE PROTECTION FENCING MAY BE TEMPORARILY ADJUSTED TO FACILITATE CONSTRUCTION. ADJUSTMENTS TO BE MADE IN CONSULTATION WITH ARBORIST ON SITE.
8. LOCATION OF TREE PROTECTION FENCING CORRESPONDS TO THE DRIP LINE RADIUS OF EXISTING TREES OR CONSTRUCTION LIMITS OR ELSE NOTED BY ARBORIST. DRIP LINE TO BE VERIFIED IN THE FIELD AS EXISTING CONDITIONS MAY VARY.
9. ALL TREES DESIGNATED TO BE PROTECTED THAT ARE DAMAGED OR KILLED DURING CONSTRUCTION ARE TO BE REPLACED WITH A TREE OF THE SAME SPECIES AND CALIPER OR LARGEST COMMERCIALY AVAILABLE CALIPER OR ALTERNATIVE SPECIES RECOMMENDED AND APPROVED BY THE LANDSCAPE ARCHITECT.
10. CONTRACTOR WILL BE RESPONSIBLE FOR ALL TREE PROTECTION OUTSIDE THE LIMIT OF WORK.
11. CONSTRUCTION FENCING MAY SERVE AS TREE PROTECTION FENCING PROVIDED REQUIREMENTS ON TREE PROTECTION FENCING DETAILS ARE MET.

Perkins&Will

225 Franklin Street, Suite 1100
Boston, MA 02110
1 617 478 0300
www.perkinswill.com

Jensen Hughes
One Lincoln Street
Boston, MA 02111
1 508 273 8481

Bohler Engineers
45 Franklin Street
Boston, MA 02110
1 617 549 6040

Perkins&Will
225 Franklin Street
Boston, MA 02110
1 617 478 0300

The Green Engineer
23 Bradford Street
Concord, MA 01742
978 341 5462

RFS Engineering
50 Milk Street
Boston, MA 02109
1 617 494 1464

RFS Engineering
50 Milk Street
Boston, MA 02109
1 617 494 1464

PROJECT



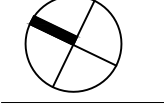
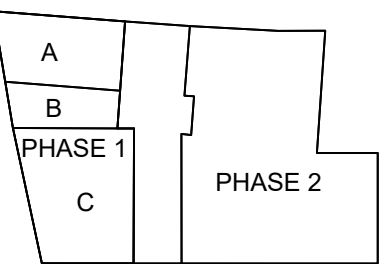
DAVIS SQUARE PLAZA



ASANA PARTNERS

1616 Camden Road Suite 210
Charlotte, NC 28203

KEYPLAN



ISSUE CHART

| MARK | ISSUE | DATE |
|------------|-------|------|
| Job Number | | |

TITLE

Tree Plan

SHEET NUMBER

2C800-04